

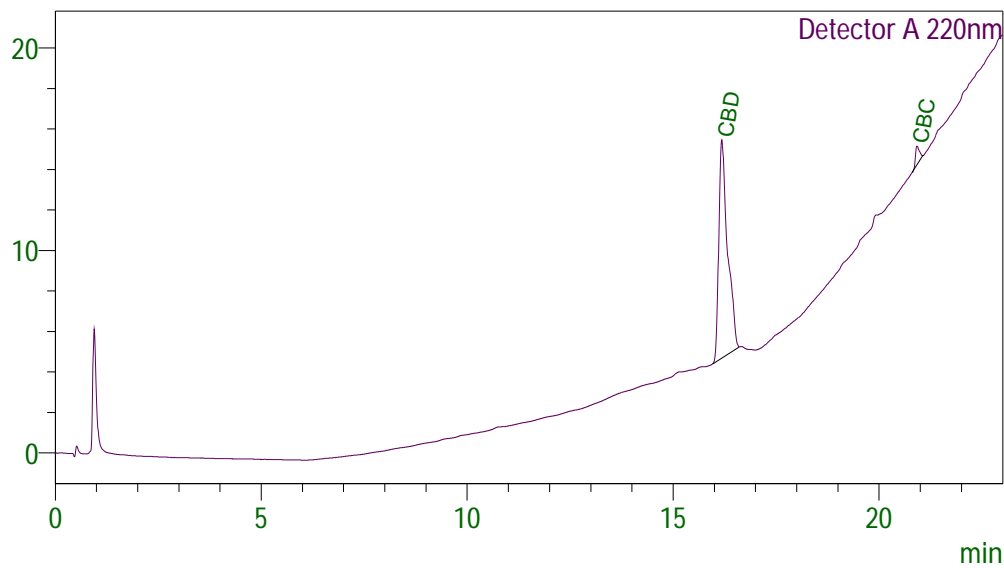
Certificate of Analysis

Sample Information

Client : Kria Botanicals
 Sample ID : BB1800CBD21-2
 Sample Type : Whole Plant Extract, CO2
 Analyst : KB
 Receipt Date : NA
 Test Date : 4/21/2021

Chromatogram

mV



Cannabinoid Summary

Detector A

ID#	Name	Weight %	Conc (mg/g)
1	CBDV	0.00	0.00
2	CBD	6.51	65.07
3	CBG	0.00	0.00
4	CBDA	0.00	0.00
5	CBGA	0.00	0.00
6	CBN	0.00	0.00
7	d9-THC	0.00	0.00
8	d8-THC	0.00	0.00
9	CBC	0.33	3.34
10	THCA-A	0.00	0.00

Percentage data represents weight percentage of sample as received by Kria Botanicals.

The collected data was compared to data collected for certified reference standards at known concentrations.

Max THC = THCa * 0.877 + d9-THC; Max CBG = CBGa * 0.878 + CBG; Instrument: High Performance Liquid Chromatography (HPLC)

A value of 0.00 indicates that the cannabinoid was not detected (ND), however it could be present at a level below the limit of detection.